



Tip #35 The new 400 sats vs. the 200 sats

Atlantic has upgraded the 1200-2200 series to the 1400-2400 series and the 4200e series is now the 4400 series. What's the difference and why are the new ones better?

Here are the differences, nice and clear:

1400-2400 LR and C

1. All the front-channel 1400 and 2400 series speakers now use Atlantic's exclusive Low Resonance Tweeter (LRT™). This remarkable tweeter crosses over from the midrange at a significantly lower frequency than in the 1200-2200 series (about 1000 Hz lower), so the new models have much improved midrange dispersion and a more open, 'airy' sound. (See Tech Tip #11.) The LRT has a much bigger surround for greater midrange excursion and output than the older tweeter, clearly visible in the comparative picture of the two. (See fig 5.)

2. The crossover networks in all models have been revised and improved for smoother sound and more uniform frequency response.

3. The aluminum tweeter faceplates for the LCR speakers have been anodized a steel-blue color, to aesthetically match the top-of-the-line 6200e and 8200e systems.

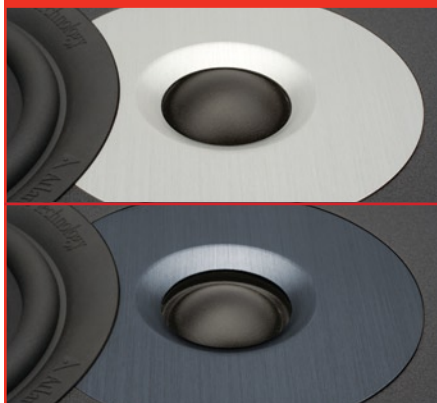
4400 LR and C

Considering the incredible praise that's been heaped on our THX-certified 4200 series ("Reviewer's Choice" award from *Sound&Vision Magazine*; "Fantastic detail and imaging...performs remarkably well" – *Audiopholics.com*), we didn't think you'd want us to mess around with its sound. So we didn't.

You did ask us for some other things, and that's what we gave you:

1. Both the 4400 LR and the 4400 C now have flush-mounted terminal cups, instead of the terminal posts that stuck out proud of the rear panel on the 4200e series. (See figure 2.)
2. The 4400 LR now has keyhole wall-mount brackets (finally!) so you can place it anywhere you choose—stand, shelf, or wall. (See figure 3.)
3. The aluminum tweeter faceplates for the LCR speakers have been anodized a steel-blue color, to aesthetically match the top-of-the-line 6200e and 8200e systems. (See figure 4.)

Figure 5

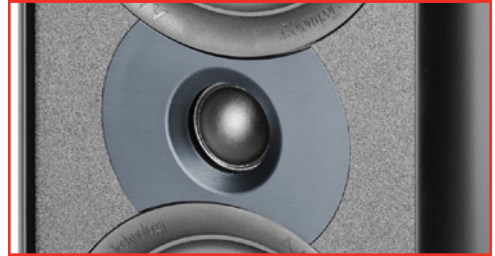


Comparison of New LRT™ to older 1200-2200 Tweeter: Larger surround for greater excursion and output is clearly visible.

Other Tech Tips:

- Tip 31: 'Local' Delivery
- Tip 32: LCR Speaker Placement
- Tip 33: Surround Speakers – Explained!
- Tip 34: Why isn't the 30 LCR an IWCB?

Figure 1 New 2400 LR



1400-2400's use LRT™ tweeter in steel-blue aluminum faceplate.

Figure 2



4400 LR and C now have flush terminal cups.

Figure 3



4400 LR now has keyhole brackets.

Figure 4



4400 LR and C steel-blue aluminum tweeter faceplate.